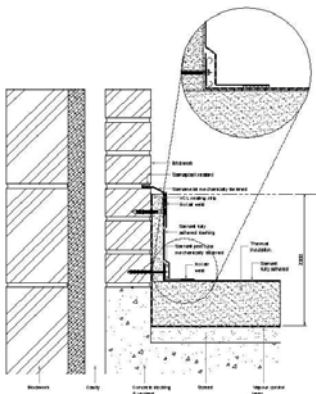
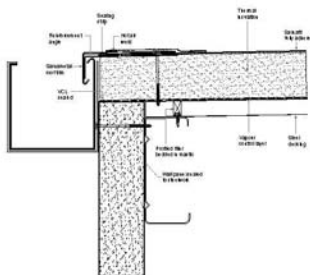


Detailing



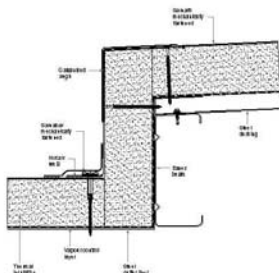
Abutment to Masonry

Any abutment to masonry, which incorporates a damp proof course (DPC), must be detailed, such that the latter discharges above point of attachment of the upstand flashing to the wall. If not, rain driven into the cavity may pass into the roof system.



Eaves and Verges

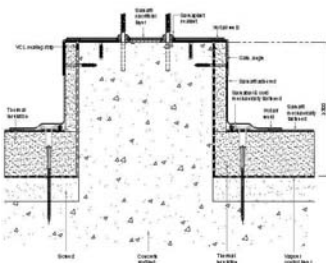
Drip details at eaves and verges are generally formed from a preformed section of membrane coated metal (such as Sarnametal). This saves time, improves appearance and reduces variability through pre-fabrication. Where membrane coated metal is not available for the membrane product, a non-ferrous edge profile may be part-covered by a membrane flashing.



Gutters

Gutters can be lined using the roofing membrane to achieve a completely uniform finish. Alternatively coated metal can be used to form gutters, because it provides continuous support to the gutter sides and it provides protection at the upper edge of the gutter walls.

Regardless of the type of gutter, specified gutters should be designed to BS EN 12053 : Part 3.



Load-Bearing Plinths for Services

In the absence of a load-bearing structure set above the roof field, independent plinths may be required. The design of plinths should allow for:

- Equipment to be demounted without affecting roof waterproofing integrity.
- Protection of exposed edges and corners from accidental damage.
- Sufficient height to allow installation and inspection of the roof membrane adjacent.
- Avoidance of cold bridging into the structure.

Many manufacturers provide protection materials, such as Sarnafil G445 and TG63-13, to allow the provision of site cast plinths.

